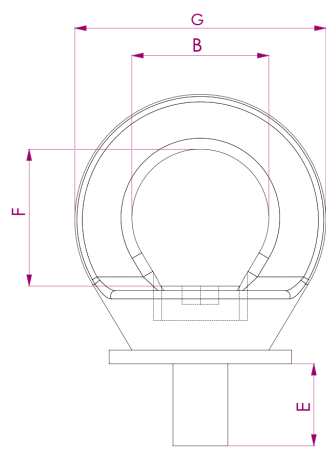
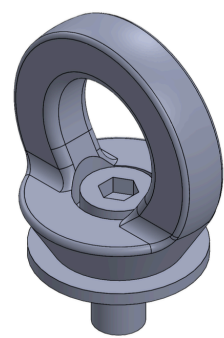




Fall Protection Anchorage Point

- Designed & Tested for Stringent Safety Requirements
- Personal Fall Protection can be connected
- 360 Deg Swivel Movement
- Mounting can be done using a traditional allen key
- Surface finish: powder coated RAL 1003
- Marking: CE
- Each anchorage point is marked with the thread size
- All dimensions are in mm

** dimensions & details are indicative and subject to change as per availability*



Code	WLL	Thread dia	E	F	B	G	Weight/Pc	Article Number
	ton							
HFPAP012	1	M12	20	32	30	57	0.3	8HFN00231
HFPAP016	1.5	M16	25	36	35	57	0.5	8HFN00232
HFPAP020	2.5	M20	30	41	40	82	0.6	8HFN00233